

Contents

In This Issue

- 6 Editor's Corner**
By Marc S. Cheves, LS
- 10 Point to Point: Prioritizing Coordinates**
Analyzing coordinates in the Order of Priority.
By Joel Leininger, LS
- 59 Test Yourself: Compound Curve Replacement**
By Dr. Richard L. Elgin, LS, PE
- 61 Surveyors & Law: Boundaries—A Dispute Between Dueling Neighbors**
An attempt to craft an equitable solution fails upon appeal.
By James J. Demma, LS, Esq.



Matt Russell, Archeologist, Nat'l Park Service Submerged Resources Center, makes measurements and draws map of the ferry Ellis Island.

On the Cover:

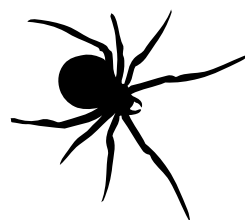
- 12 Mapping the Nation's Treasures**
Surveyors take part in a National Park Service project on Ellis Island that will help to preserve the rich immigration history of Ellis Island.
By Dave Conlin, Art Ireland,

- 63 Product Review: Topcon HiPer Lite+ with TopSURV**
By Al Pepling, LS
- 60 FeedBack**
- 69 MarketPlace**
- 73 Advertisers' Directory**



Features

- 24 Testing ARIES: Streamlining Emergency Response**
Real-time mapping holds enormous potential for emergency workers.
By Wendy Lathrop, LS
- 36 Selecting Multi-Function Survey Tools for GIS, Design, and Construction**
A water service department in rural Alabama creates a system for modeling, design, and mapping to interface with its county GIS network.
By Robert Davis
- 46 The Fabric of Surveying in America: Surveying in California**
A fascinating parade of characters and events influenced the complex boundary history of California.
By Francois D. "Bud" Uzes, LS
- 56 Small Boat Survey "Goes Large"**
A small boat hydro survey off the island of Barbados aids in expanding the docking area for the *Queen Mary II*.
By Gregory Hutchinson, LS



- 74 Along Came A Spider—Spinning Silk For Cross-Hairs, Part I**
The search for cross-hairs for scientific instrumentation.
By Silvio A. Bedini